

## Di-ubiquitin Explorer Kit (Cat. # J2000)

### Description

This kit contains 5 µg each of linear, K6, K11, K27, K29, K33, K48, and K63-linked diubiquitin, a total of eight different diubiquitin forms. It can be used for determining linkage specificity of deubiquitinating enzymes and polyubiquitin-binding proteins.

### Components

Component	Stock Concentration	Volume
• Linear diUb	0.5 mg/ml	10 µl
• K6-linked diUb	0.5 mg/ml	10 µl
• K11-linked diUb	0.5 mg/ml	10 µl
• K27-linked diUb	0.5 mg/ml	10 µl
• K29-linked diUb	0.5 mg/ml	10 µl
• K33-linked diUb	0.5 mg/ml	10 µl
• K48-linked diUb	0.5 mg/ml	10 µl
• K63-linked diUb	0.5 mg/ml	10 µl

**Molecular Weight:** ~17 kDa

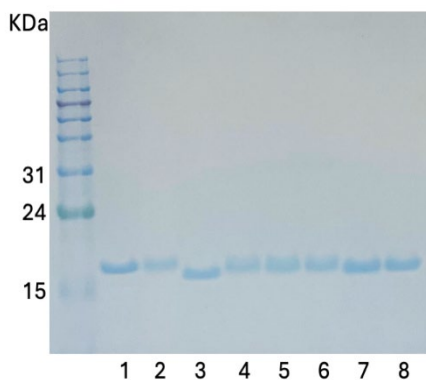
**Purity:** ≥90% by SDS-PAGE

**Storage:** -80°C. Avoid multiple freeze/thaw cycles.

**Storage Buffer:** 20 mM Tris, pH7.1 at 37 °C, 150 mM NaCl, 2 mM βME, 10% Glycerol

**Note:** Different diUb forms may be stained by Coomassie or blotted by anti-Ub antibodies differently.

### Image:



Coomassie-stained SDS-PAGE of 1.5 µg each diUb

- 1: Linear diUb
- 2: K6-linked diUb
- 3: K11-linked diUb
- 4: K27-linked diUb
- 5: K29-linked diUb
- 6: K33-linked diUb
- 7: K48-linked diUb
- 8: K63-linked diUb

